

**Hoffman Elem School**  
**Glenview CCSD 34**  
**Glenview, ILLINOIS**



**ILLINOIS**  
**SCHOOL**  
**REPORT**  
**CARD**

**GRADES : 3 4 5**

State and federal laws require public school districts to release report cards to the public each year.

Starting in 2009, charter school information is included in district statistics.

**STUDENTS**

RACIAL/ETHNIC BACKGROUND AND OTHER INFORMATION														
	White	Black	Hispanic	Asian/ Pacific Islander	Native American	Multi racial /Ethnic	Percent Low- Income	Percent Limited- English- Proficient	Percent IEP	High Sch. Dropout Rate	Chronic Truancy Rate	Mobility Rate	Attendance Rate	Total Enrollment
<b>School</b>	68.0	1.9	14.8	11.7	0.0	3.5	22.3	18.7	12.9		0.0	6.3	96.8	566
<b>District</b>	70.4	1.5	11.7	12.7	0.0	3.7	17.4	14.2	13.7		0.1	7.9	95.9	4,565
<b>State</b>	52.8	18.8	21.1	4.2	0.2	2.9	45.4	7.6	13.1		3.6	13.0	93.9	2,064,312

**Low-income** students come from families receiving public aid; live in institutions for neglected or delinquent children; are supported in foster homes with public funds; or are eligible to receive free or reduced-price lunches.

IEP Students are those students eligible to receive special education services.

**Limited-English-proficient** students are those students eligible for transitional bilingual programs.

**Mobility rate** is based on the number of times students enroll in or leave a school during the school year.

**Chronic truants** are students who are absent from school without valid cause for 18 or more of the last 180 school days.

**INSTRUCTIONAL SETTING**

PARENTAL CONTACT*		STUDENT-TO-STAFF RATIOS			
	Percent	Pupil- Teacher Elementary	Pupil- Teacher Secondary	Pupil- Certified Staff	Pupil- Administrator
<b>School</b>	100.0	--	--	--	--
<b>District</b>	100.0	14.7		10.8	217.3
<b>State</b>	96.2	18.2		13.3	203.8

\* Parental contact includes parent-teacher conferences, parental visits to school, school visits to home, telephone conversations, and written correspondence.

AVERAGE CLASS SIZE (as of the first school day in May)										
Grades	K	1	2	3	4	5	6	7	8	9 - 12
<b>School</b>				22.6	22.4	23.4				
<b>District</b>				22.2	22.2	23.1				
<b>State</b>				22.1	22.6	22.8				

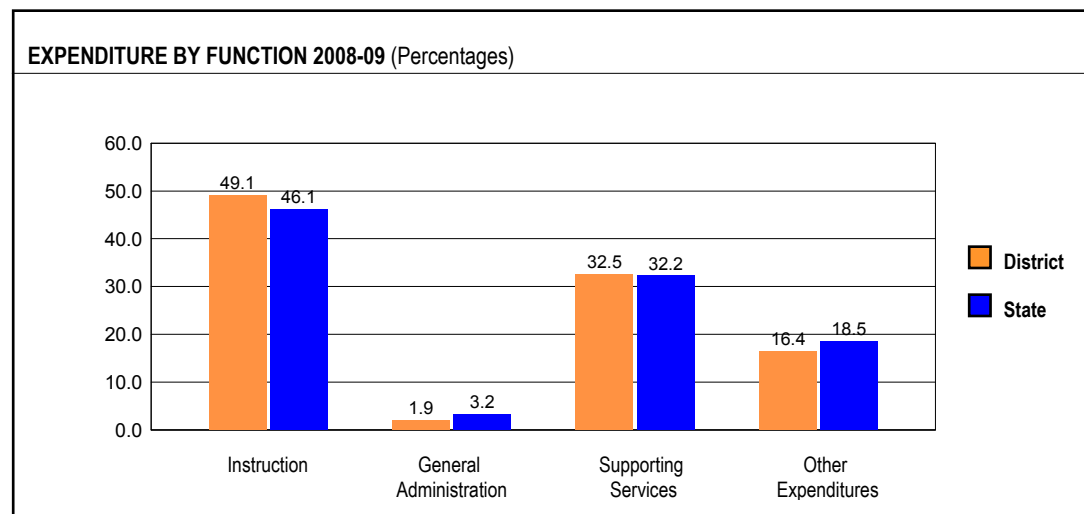
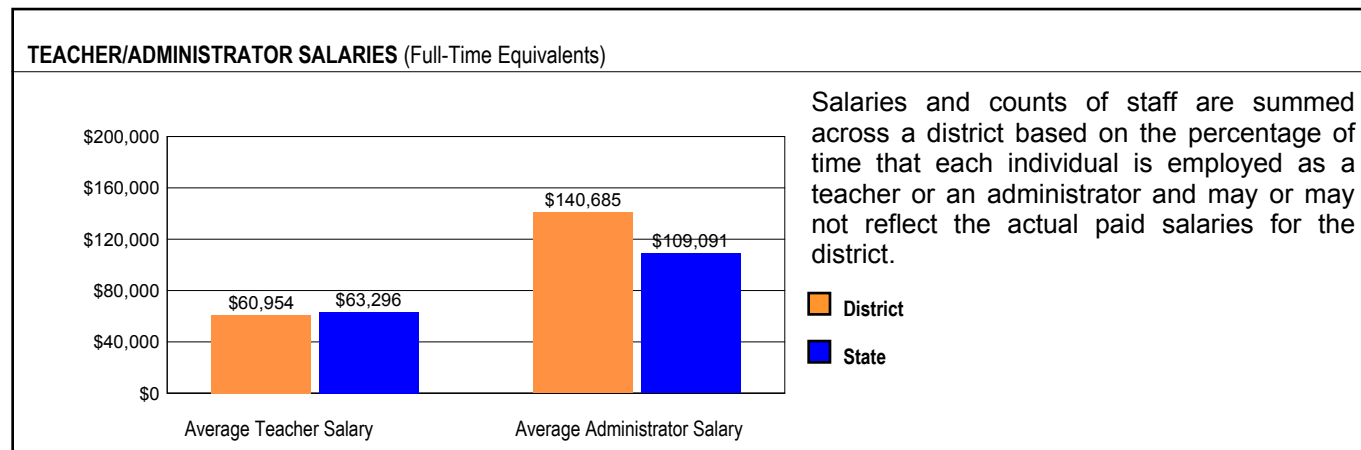
TIME DEVOTED TO TEACHING CORE SUBJECTS (Minutes Per Day)												
Grades	Mathematics			Science			English/Language Arts			Social Science		
	3	6	8	3	6	8	3	6	8	3	6	8
<b>School</b>	60			30			160			30		
<b>District</b>	60			30			133			30		
<b>State</b>	59			30			145			30		

TEACHER INFORMATION (Full-Time Equivalents)								
	White	Black	Hispanic	Asian/ Pacific Islander	Native American	Male	Female	Total Number
District	94.0	0.6	2.8	2.7	0.0	13.3	86.7	343
State	85.2	8.1	5.2	1.4	0.2	23.0	77.0	132,502

TEACHER INFORMATION (Continued)					
	Average Teaching Experience (Years)	% of Teachers with Bachelor's Degrees	% of Teachers with Master's & Above	% of Teachers with Emergency or Provisional Credentials	% of Classes Not Taught by Highly Qualified Teachers
School	--	--	--	0.0	0.0
District	9.6	27.1	72.4	0.0	0.0
State	12.7	42.2	57.4	0.5	0.7

Some teacher/administrator data are not collected at the school level.

## SCHOOL DISTRICT FINANCES



REVENUE BY SOURCE 2008-09				EXPENDITURE BY FUND 2008-09			
	District	District %	State %		District	District %	State %
Local Property Taxes	\$49,377,125	82.4	58.4	Education	\$45,561,209	73.6	69.6
Other Local Funding	\$3,210,039	5.4	6.9	Operations & Maintenance	\$4,466,976	7.2	7.9
General State Aid	\$1,253,713	2.1	14.5	Transportation	\$2,776,517	4.5	3.8
Other State Funding	\$3,248,488	5.4	8.3	Debt Service	\$3,514,820	5.7	7.0
Federal Funding	\$2,825,213	4.7	11.9	Tort	\$304,973	0.5	1.2
<b>TOTAL</b>	<b>\$59,914,578</b>			Municipal Retirement/ Social Security	\$1,463,072	2.4	1.8
				Fire Prevention & Safety	\$42,147	0.1	0.8
				Site & Construction/ Capital Improvement	\$3,767,876	6.1	7.9
				<b>TOTAL</b>	<b>\$61,897,590</b>		

OTHER FINANCIAL INDICATORS				
	2007 Equalized Assessed Valuation per Pupil	2007 Total School Tax Rate per \$100	2008-09 Instructional Expenditure per Pupil	2008-09 Operating Expenditure per Pupil
District	\$544,034	2.33	\$7,685	\$13,204
State	**	**	\$6,483	\$11,197

\*\* Due to the way Illinois school districts are configured, state averages for equalized assessed valuation per pupil and total school tax rate per \$100 are not provided.

**Equalized assessed valuation** includes all computed property values upon which a district's local tax rate is calculated.

**Total school tax rate** is a district's total tax rate as it appears on local property tax bills.

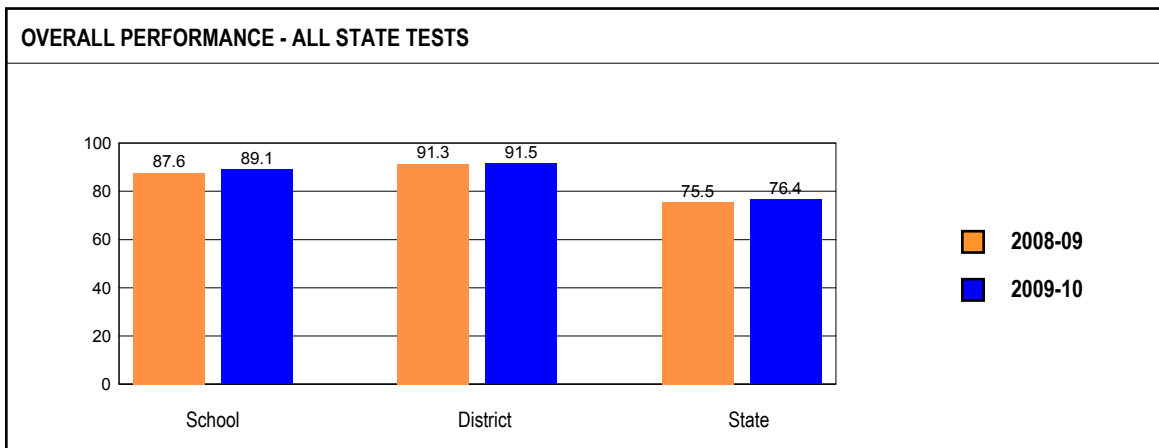
**Instructional expenditure per pupil** includes the direct costs of teaching pupils or the interaction between teachers and pupils.

**Operating expenditure per pupil** includes the gross operating cost of a school district excluding summer school, adult education, bond principal retired, and capital expenditures.

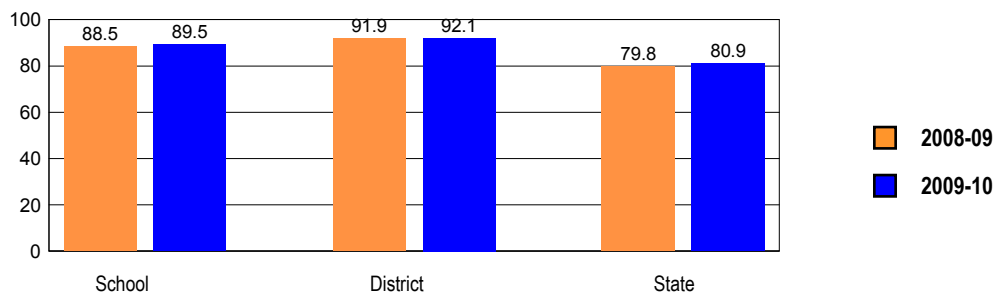
## ACADEMIC PERFORMANCE

### OVERALL STUDENT PERFORMANCE

These charts present the overall percentages of state test scores categorized as meeting or exceeding the Illinois Learning Standards for your school, district, and the state. They represent your school's performance in reading, mathematics, and science.

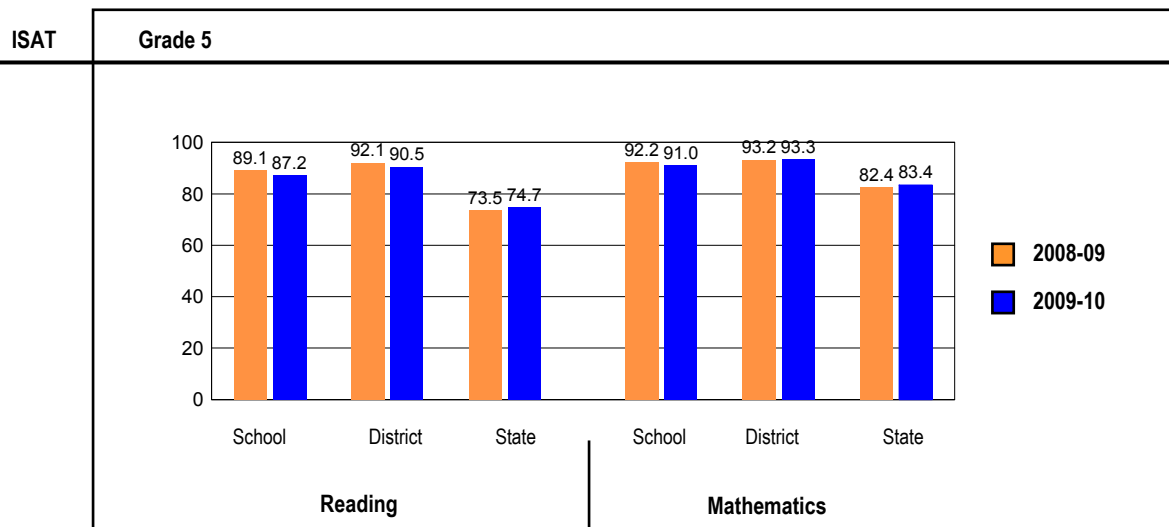
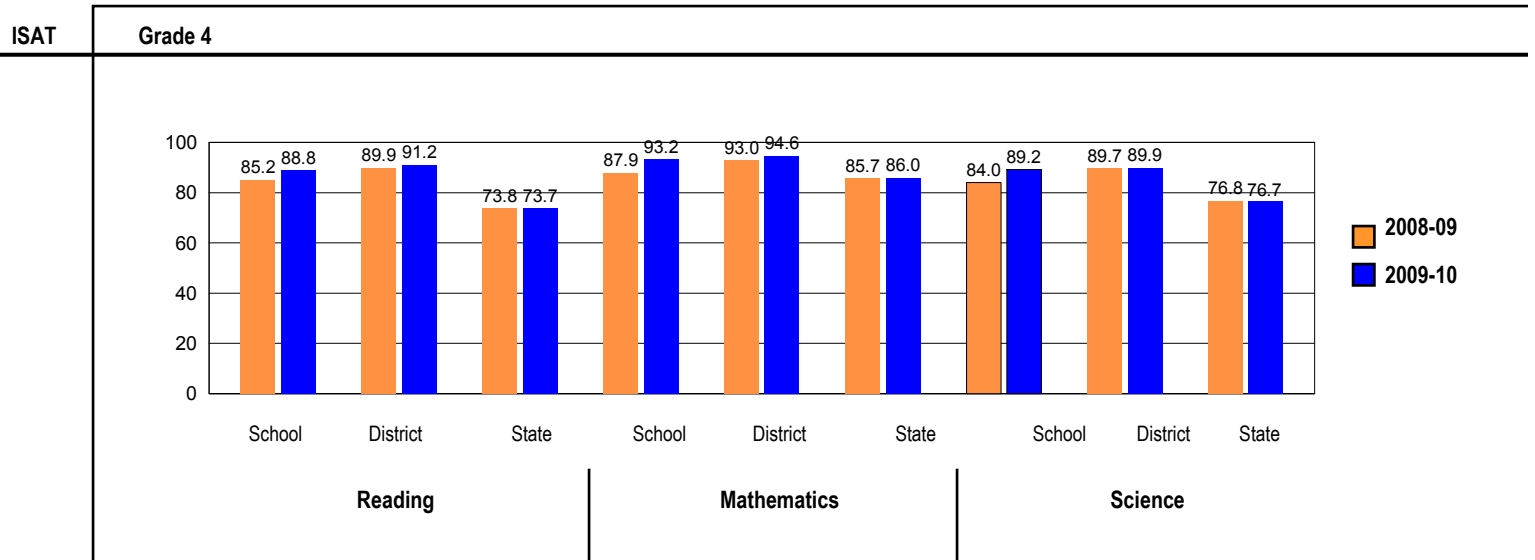
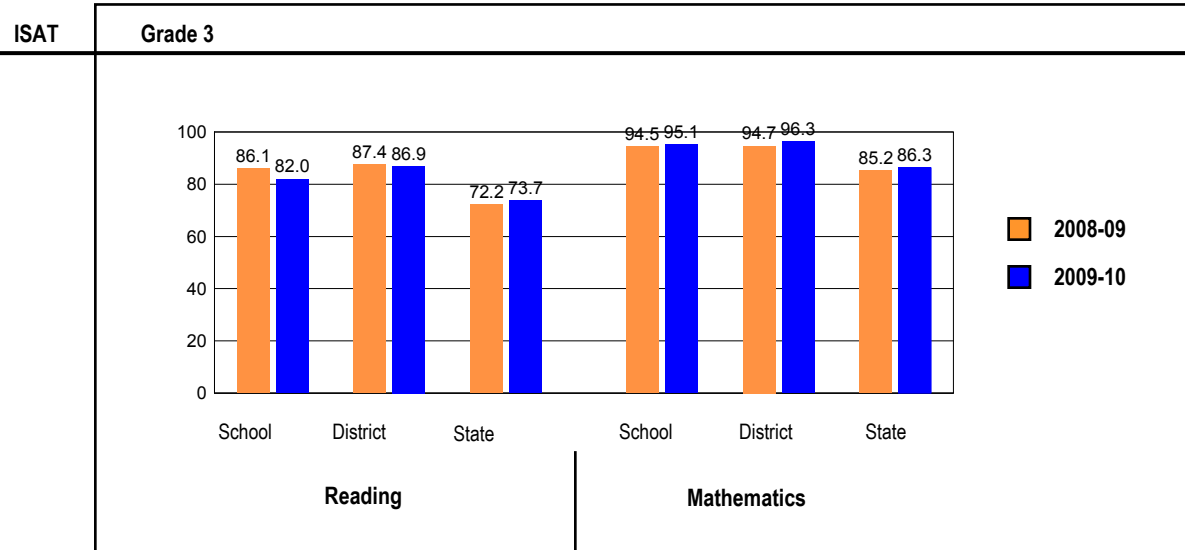


**OVERALL ILLINOIS STANDARDS ACHIEVEMENT TEST (ISAT) PERFORMANCE**



**ISAT PERFORMANCE**

These charts provide information on attainment of the Illinois Learning Standards. They show the percents of student scores meeting or exceeding Standards for the grades and subjects tested on ISAT.



## PERFORMANCE ON STATE ASSESSMENTS

Federal law requires that student achievement results for reading, mathematics, and science for schools providing Title I services be reported to the general public.

The Illinois Standards Achievement Test (ISAT) is administered to students in grades 3 through 8. The Prairie State Achievement Examination (PSAE) is administered to students in grade 11. The Illinois Alternate Assessment (IAA) is administered to students with disabilities whose Individualized Education Programs (IEPs) indicate that participation in the ISAT or PSAE would not be appropriate.

Students with disabilities have an IEP (No Child Left Behind Act). An IEP is a written plan for a child with a disability who is eligible to receive special education services under the Individuals with Disabilities Education Act.

Reading and Mathematics are tested in grades 3 through 8 and 11. Science is tested in grades 4, 7, and 11.

In order to protect students' identities, test data for groups of fewer than ten students are not reported.

PERCENTAGE OF STUDENTS NOT TESTED IN STATE TESTING PROGRAMS FOR READING AND MATHEMATICS														
		Gender			Racial/Ethnic Background						LEP	Migrant	Students with Disabilities	Economically Disadvantaged
		All	Male	Female	White	Black	Hispanic	Asian/Pacific Islander	Native American	Multi racial /Ethnic				
School	*Enrollment	580	312	268	392	10	89	68	0	21	108	0	79	134
	Reading	0.2	0.3	0.0	0.3	0.0	0.0	0.0		0.00	0.0		0.0	0.0
	Mathematics	0.2	0.3	0.0	0.3	0.0	0.0	0.0		0.00	0.0		0.0	0.0
District	*Enrollment	3,036	1,529	1,507	2,162	44	345	391	0	94	337	0	395	565
	Reading	0.0	0.1	0.0	0.0	0.0	0.0	0.0		0.0	0.0		0.0	0.0
	Mathematics	0.0	0.1	0.0	0.0	0.0	0.0	0.0		0.0	0.0		0.0	0.0
State	*Enrollment	1,068,202	545,784	522,252	565,375	199,071	219,899	44,975	2,039	36,134	67,911	346	150,721	503,002
	Reading	0.2	0.3	0.2	0.1	0.5	0.2	0.2	0.2	0.2	0.3	0.9	0.5	0.3
	Mathematics	0.2	0.3	0.2	0.1	0.5	0.2	0.2	0.2	0.2	0.3	0.9	0.5	0.3

\* Enrollment as reported during the testing windows for grades 3 - 8 and 11.

PERCENTAGE OF STUDENTS NOT TESTED IN STATE TESTING PROGRAMS FOR SCIENCE ONLY														
		Gender			Racial/Ethnic Background						LEP	Migrant	Students with Disabilities	Economically Disadvantaged
		All	Male	Female	White	Black	Hispanic	Asian/Pacific Islander	Native American	Multi racial /Ethnic				
School	*Enrollment	206	113	93	140	5	29	22	0	10	36	0	23	49
	Science	0.0	0.0	0.0	0.0		0.0	0.0		0.0	0.0		0.0	0.0
District	*Enrollment	1,028	510	518	738	13	108	125	0	44	102	0	133	205
	Science	0.0	0.0	0.0	0.0	0.0	0.0	0.0		0.0	0.0		0.0	0.0
State	*Enrollment	449,149	228,523	220,563	244,235	81,931	88,351	19,309	898	14,165	23,830	105	62,715	201,259
	Science	0.4	0.5	0.3	0.2	1.0	0.5	0.3	0.4	0.3	0.5	1.9	0.9	0.6

\* Enrollment as reported during the testing windows for grades 4, 7, and 11.

### ILLINOIS STANDARDS ACHIEVEMENT TEST (ISAT)

The following tables show the percentages of student scores in each of four performance levels. These levels were established with the help of Illinois educators who teach the grade levels and learning areas tested. Due to rounding, the sum of the percentages in the four performance levels may not always equal 100.

- Level 1 -- Academic Warning - Student work demonstrates limited knowledge and skills in the subject. Because of major gaps in learning, students apply knowledge and skills ineffectively.
- Level 2 -- Below Standards - Student work demonstrates basic knowledge and skills in the subject. However, because of gaps in learning, students apply knowledge and skills in limited ways.
- Level 3 -- Meets Standards - Student work demonstrates proficient knowledge and skills in the subject. Students effectively apply knowledge and skills to solve problems.
- Level 4 -- Exceeds Standards - Student work demonstrates advanced knowledge and skills in the subject. Students creatively apply knowledge and skills to solve problems and evaluate the results.

### Grade 3

#### Grade 3 - All

Levels	Reading				Mathematics			
	1	2	3	4	1	2	3	4
School	1.6	16.4	40.4	41.5	0.0	4.9	36.6	58.5
District	1.4	11.7	40.2	46.7	0.0	3.7	31.3	65.0
State	5.4	20.9	45.9	27.8	2.9	10.7	44.7	41.7

#### Grade 3 - Gender

Levels	Reading				Mathematics				
	1	2	3	4	1	2	3	4	
Male	School	1.1	15.2	46.7	37.0	0.0	4.3	37.0	58.7
	District	1.6	12.1	44.0	42.3	0.0	3.6	30.2	66.1
	State	6.6	22.7	45.6	25.1	3.1	10.6	43.2	43.0
Female	School	2.2	17.6	34.1	46.2	0.0	5.5	36.3	58.2
	District	1.1	11.4	36.7	50.8	0.0	3.8	32.2	64.0
	State	4.1	19.1	46.2	30.7	2.7	10.9	46.2	40.2

**Grade 3 - Racial/Ethnic Background**

Levels	Reading				Mathematics				
	1	2	3	4	1	2	3	4	
White	School	0.0	12.0	39.3	48.7	0.0	1.7	29.9	68.4
	District	0.8	7.8	39.7	51.7	0.0	2.2	26.7	71.1
	State	2.2	11.9	46.6	39.3	1.0	5.3	39.0	54.7
Black	School								
	District								
	State	9.8	31.1	46.2	12.9	7.4	20.0	51.9	20.6
Hispanic	School	9.7	38.7	38.7	12.9	0.0	16.1	64.5	19.4
	District	4.8	38.7	43.5	12.9	0.0	11.3	62.9	25.8
	State	9.7	35.1	44.2	11.0	4.1	16.7	54.3	24.9
Asian/Pacific Islander	School	0.0	7.7	50.0	42.3	0.0	3.8	26.9	69.2
	District	1.6	6.3	42.2	50.0	0.0	3.1	23.4	73.4
	State	1.7	10.0	43.5	44.9	0.9	3.5	27.3	68.4
Native American	School								
	District								
	State	3.8	19.8	48.3	28.1	2.3	8.0	46.8	43.0
Multiracial/Ethnic	School								
	District	0.0	14.3	28.6	57.1	0.0	4.8	38.1	57.1
	State	3.7	17.3	48.2	30.7	2.1	9.0	45.8	43.1

**Grade 3 - Limited-English-Proficient**

Levels	Reading				Mathematics			
	1	2	3	4	1	2	3	4
School	7.3	43.9	41.5	7.3	0.0	17.1	73.2	9.8
District	5.7	45.5	44.3	4.5	0.0	15.9	68.2	15.9
State	14.9	47.0	34.1	4.1	5.9	22.6	55.1	16.4

**Grade 3 - Students with Disabilities**

Levels	Reading				Mathematics				
	1	2	3	4	1	2	3	4	
IEP	School	5.9	35.3	32.4	26.5	0.0	14.7	44.1	41.2
	District	6.1	31.8	37.9	24.2	0.0	15.2	48.5	36.4
	State	18.9	36.6	33.4	11.1	9.3	22.4	46.7	21.7
Non-IEP	School	0.7	12.1	42.3	45.0	0.0	2.7	34.9	62.4
	District	0.7	8.7	40.6	50.0	0.0	2.0	28.7	69.3
	State	3.4	18.6	47.7	30.2	2.0	9.1	44.4	44.5

**Grade 3 - Economically Disadvantaged**

Levels	Reading				Mathematics				
	1	2	3	4	1	2	3	4	
Free/Reduced Price Lunch	School	6.7	28.9	44.4	20.0	0.0	11.1	66.7	22.2
	District	4.4	28.9	51.1	15.6	0.0	10.0	57.8	32.2
	State	9.0	30.9	46.4	13.7	5.0	16.8	52.7	25.5
Not Eligible	School	0.0	12.3	39.1	48.6	0.0	2.9	26.8	70.3
	District	0.7	8.1	37.9	53.3	0.0	2.4	25.6	72.0
	State	1.6	10.4	45.3	42.7	0.8	4.3	36.2	58.7

**Grade 4****Grade 4 - All**

Levels	Reading				Mathematics				Science			
	1	2	3	4	1	2	3	4	1	2	3	4
School	0.5	10.7	38.0	50.7	0.0	6.8	46.8	46.3	0.5	10.3	69.1	20.1
District	0.4	8.5	37.7	53.5	0.2	5.2	44.7	49.9	0.4	9.7	67.3	22.7
State	1.2	25.1	44.8	28.9	1.1	12.9	57.7	28.2	2.8	20.5	59.6	17.0

**Grade 4 - Gender**

Levels	Reading				Mathematics				Science				
	1	2	3	4	1	2	3	4	1	2	3	4	
Male	School	0.9	11.6	35.7	51.8	0.0	9.8	39.3	50.9	0.9	10.7	64.3	24.1
	District	0.4	10.5	37.7	51.4	0.0	7.2	38.8	54.0	0.4	9.8	62.7	27.2
	State	1.7	27.7	43.9	26.7	1.3	13.3	56.1	29.3	3.2	20.1	57.4	19.4
Female	School	0.0	9.7	40.9	49.5	0.0	3.2	55.9	40.9	0.0	9.8	75.0	15.2
	District	0.4	6.5	37.6	55.6	0.4	3.2	50.5	45.9	0.4	9.6	71.8	18.2
	State	0.7	22.3	45.7	31.2	0.9	12.5	59.5	27.1	2.5	21.0	62.0	14.6

**Grade 4 - Racial/Ethnic Background**

Levels	Reading				Mathematics				Science				
	1	2	3	4	1	2	3	4	1	2	3	4	
White	School	0.7	5.0	37.9	56.4	0.0	6.4	45.0	48.6	0.7	6.4	69.3	23.6
	District	0.3	5.2	34.3	60.2	0.3	3.4	42.0	54.3	0.3	6.8	67.1	25.8
	State	0.5	15.1	45.0	39.4	0.5	6.6	54.4	38.5	0.8	10.2	63.7	25.4
Black	School												
	District												
	State	2.3	40.9	44.4	12.4	2.7	25.7	61.3	10.3	7.2	39.9	49.2	3.7
Hispanic	School	0.0	41.4	44.8	13.8	0.0	10.3	72.4	17.2	0.0	25.0	75.0	0.0
	District	1.5	29.2	49.2	20.0	0.0	18.5	66.2	15.4	1.6	26.6	67.2	4.7
	State	2.1	38.8	45.3	13.9	1.5	18.7	65.5	14.2	4.5	31.2	58.6	5.7
Asian/Pacific Islander	School	0.0	0.0	23.8	76.2	0.0	0.0	14.3	85.7	0.0	0.0	66.7	33.3
	District	0.0	4.5	43.3	52.2	0.0	1.5	34.3	64.2	0.0	4.5	70.1	25.4
	State	0.4	10.7	39.6	49.2	0.5	4.2	41.2	54.1	1.3	9.1	57.7	31.9
Native American	School												
	District												
	State	0.7	21.7	44.9	32.6	0.4	13.0	59.8	26.8	3.3	17.4	58.7	20.7
Multiracial/Ethnic	School	0.0	20.0	40.0	40.0	0.0	0.0	60.0	40.0	0.0	20.0	70.0	10.0
	District	0.0	6.3	37.5	56.3	0.0	0.0	48.5	51.5	0.0	9.1	69.7	21.2
	State	0.5	21.0	47.2	31.2	0.6	11.4	59.9	28.0	1.7	17.2	63.0	18.1

**Grade 4 - Limited-English-Proficient**

Levels	Reading				Mathematics				Science			
	1	2	3	4	1	2	3	4	1	2	3	4
School	2.8	47.2	44.4	5.6	0.0	19.4	63.9	16.7	2.9	28.6	65.7	2.9
District	2.8	39.4	49.3	8.5	0.0	23.6	62.5	13.9	2.8	36.6	59.2	1.4
State	4.3	59.7	32.1	3.9	3.0	30.1	60.0	6.9	8.9	45.2	44.2	1.7

**Grade 4 - Students with Disabilities**

Levels	Reading				Mathematics				Science				
	1	2	3	4	1	2	3	4	1	2	3	4	
IEP	School	0.0	45.5	36.4	18.2	0.0	50.0	31.8	18.2	4.5	40.9	45.5	9.1
	District	1.4	35.7	42.9	20.0	1.4	32.4	47.9	18.3	2.8	33.8	56.3	7.0
	State	5.9	54.4	29.8	10.0	5.3	31.9	51.6	11.2	8.1	35.8	48.6	7.4
Non-IEP	School	0.5	6.6	38.3	54.6	0.0	1.6	48.6	49.7	0.0	6.6	72.0	21.4
	District	0.2	4.5	36.9	58.4	0.0	1.2	44.2	54.5	0.0	6.2	68.9	24.9
	State	0.5	20.6	47.1	31.8	0.5	10.0	58.7	30.9	2.0	18.2	61.3	18.5

**Grade 4 - Economically Disadvantaged**

Levels	Reading				Mathematics				Science				
	1	2	3	4	1	2	3	4	1	2	3	4	
Free/Reduced Price Lunch	School	2.0	34.7	46.9	16.3	0.0	10.2	67.3	22.4	0.0	25.0	70.8	4.2
	District	1.9	28.3	55.7	14.2	0.0	16.0	66.0	17.9	1.0	27.6	66.7	4.8
	State	2.1	37.9	45.7	14.2	1.9	20.4	63.9	13.8	5.0	32.3	56.6	6.2
Not Eligible	School	0.0	3.2	35.3	61.5	0.0	5.8	40.4	53.8	0.6	5.8	68.6	25.0
	District	0.0	3.8	33.4	62.8	0.2	2.7	39.7	57.4	0.2	5.5	67.4	26.8
	State	0.3	12.3	43.9	43.5	0.3	5.4	51.6	42.6	0.7	8.8	62.7	27.8

**Grade 5****Grade 5 - All**

Levels	Reading				Mathematics			
	1	2	3	4	1	2	3	4
School	0.0	12.8	37.2	50.0	0.0	9.0	47.9	43.1
District	0.0	9.5	36.5	54.0	0.0	6.7	48.7	44.6
State	0.3	25.0	44.7	30.0	0.3	16.3	65.8	17.6

**Grade 5 - Gender**

Levels	Reading				Mathematics				
	1	2	3	4	1	2	3	4	
Male	School	0.0	12.4	36.2	51.4	0.0	6.7	49.5	43.8
	District	0.0	9.2	36.0	54.8	0.0	5.9	48.5	45.6
	State	0.4	28.5	44.1	27.0	0.4	17.1	64.4	18.0
Female	School	0.0	13.3	38.6	48.2	0.0	12.0	45.8	42.2
	District	0.0	9.8	37.0	53.2	0.0	7.7	48.9	43.4
	State	0.2	21.3	45.5	33.1	0.3	15.4	67.3	17.1

**Grade 5 - Racial/Ethnic Background**

Levels	Reading				Mathematics				
	1	2	3	4	1	2	3	4	
White	School	0.0	6.1	31.8	62.1	0.0	4.5	44.7	50.8
	District	0.0	4.6	32.6	62.8	0.0	4.3	45.9	49.7
	State	0.2	14.8	45.1	40.0	0.1	9.1	67.0	23.8
Black	School								
	District								
	State	0.6	41.8	43.4	14.2	0.9	32.2	61.2	5.7
Hispanic	School	0.0	44.8	44.8	10.3	0.0	37.9	58.6	3.4
	District	0.0	44.6	39.3	16.1	0.0	30.4	62.5	7.1
	State	0.4	38.6	45.9	15.0	0.4	22.5	69.4	7.7
Asian/Pacific Islander	School	0.0	0.0	65.0	35.0	0.0	0.0	50.0	50.0
	District	0.0	3.2	54.0	42.9	0.0	0.0	46.0	54.0
	State	0.0	10.8	38.4	50.8	0.1	4.8	51.1	44.1
Native American	School								
	District								
	State	0.0	24.9	44.6	30.5	0.0	13.4	70.6	16.0
Multiracial/Ethnic	School								
	District	0.0	0.0	36.4	63.6	0.0	0.0	54.5	45.5
	State	0.3	21.4	47.1	31.2	0.2	14.6	68.6	16.5

**Grade 5 - Limited-English-Proficient**

Levels	Reading				Mathematics			
	1	2	3	4	1	2	3	4
School	0.0	45.2	45.2	9.7	0.0	32.3	64.5	3.2
District	0.0	42.6	51.9	5.6	0.0	33.3	64.8	1.9
State	1.1	67.5	28.3	3.1	1.1	40.4	55.7	2.8

**Grade 5 - Students with Disabilities**

Levels	Reading				Mathematics				
	1	2	3	4	1	2	3	4	
IEP	School	0.0	55.0	25.0	20.0	0.0	45.0	35.0	20.0
	District	0.0	41.1	39.3	19.6	0.0	35.7	53.6	10.7
	State	1.6	60.4	29.9	8.1	1.6	42.9	50.5	4.9
Non-IEP	School	0.0	7.7	38.7	53.6	0.0	4.8	49.4	45.8
	District	0.0	5.5	36.1	58.3	0.0	3.1	48.1	48.8
	State	0.1	19.5	47.1	33.4	0.1	12.1	68.2	19.5

**Grade 5 - Economically Disadvantaged**

Levels	Reading				Mathematics				
	1	2	3	4	1	2	3	4	
Free/Reduced Price Lunch	School	0.0	40.0	47.5	12.5	0.0	27.5	65.0	7.5
	District	0.0	33.0	48.4	18.7	0.0	22.0	67.0	11.0
	State	0.5	38.3	45.8	15.4	0.6	25.5	66.6	7.4
Not Eligible	School	0.0	5.4	34.5	60.1	0.0	4.1	43.2	52.7
	District	0.0	4.3	33.9	61.8	0.0	3.4	44.7	51.9
	State	0.1	12.2	43.8	43.9	0.1	7.4	65.1	27.4

## 2010 ADEQUATE YEARLY PROGRESS (AYP) Status Report

Is this school making Adequate Yearly Progress (AYP)?	No	Has this school been identified for School Improvement according to the AYP specifications of the federal No Child Left Behind Act?	Yes
Is this school making AYP in Reading?	No	2010-11 Federal Improvement Status	Choice
Is this school making AYP in Mathematics?	Yes	2010-11 State Improvement Status	Academic Early Warning Year 2

	Percent Tested on State Tests				Percent Meeting/Exceeding Standards *						Other Indicators			
	Reading		Mathematics		Reading			Mathematics			Attendance Rate		Graduation Rate	
	%	Met AYP	%	Met AYP	%	Safe Harbor Target **	Met AYP	%	Safe Harbor Target **	Met AYP	%	Met AYP	%	Met AYP
<b>State AYP Minimum Target</b>	95.0		95.0		77.5			77.5			91.0		80.0	
<b>All</b>	99.8	Yes	99.8	Yes	86.0		Yes	92.8		Yes	96.8	Yes		
<b>White</b>	99.7	Yes	99.7	Yes	91.8		Yes	95.1		Yes				
<b>Black</b>														
<b>Hispanic</b>	100.0	Yes	100.0	Yes	55.6	53.0	Yes	80.2		Yes	96.6			
<b>Asian/Pacific Islander</b>	100.0	Yes	100.0	Yes	96.6		Yes	96.6		Yes				
<b>Native American</b>														
<b>Multiracial /Ethnic</b>														
<b>LEP</b>	100.0	Yes	100.0	Yes	61.8	68.1	No	82.9		Yes	96.7			
<b>Students with Disabilities</b>	100.0	Yes	100.0	Yes	49.3	62.2	No	62.7	64.0	Yes	96.8			
<b>Economically Disadvantaged</b>	100.0	Yes	100.0	Yes	63.6	63.8	Yes	83.9		Yes	96.6			

**Four Conditions Are Required For Making Adequate Yearly Progress (AYP):**

1. At least 95% tested in reading and mathematics for every student group. If the current year participation rate is less than 95%, this condition may be met if the average of the current and preceding year rates is at least 95%, or if the average of the current and two preceding years is at least 95%. Only actual participation rates are printed. If the participation rate printed is less than 95% and yet this school makes AYP, it means that the 95% condition was met by averaging.
2. At least 77.5% meeting/exceeding standards in reading and mathematics for every group. For any group with less than 77.5% meeting/exceeding standards, a 95% confidence interval was applied. Subgroups may meet this condition through Safe Harbor provisions. \*\*\*
3. At least 91% attendance rate for non-high schools and at least 80% graduation rate for high schools.

\* Includes only students enrolled as of 05/01/2009.

\*\* Safe Harbor Targets of 77.5% or above are not printed.

\*\*\* Subgroups with fewer than 45 students are not reported. Safe Harbor only applies to subgroups of 45 or more. In order for Safe Harbor to apply, a subgroup must decrease by 10% the percentage of scores that did not meet state standards from the previous year plus meet the other indicators (attendance rate for non-high schools and graduation rate for high schools) for the subgroup. For subgroups that do not meet their Safe Harbor Targets, a 75% confidence interval is applied. Safe Harbor allows schools an alternate method to meet subgroup minimum targets on achievement.

## 2010 DIFFERENTIATED ACCOUNTABILITY CLASSIFICATION

The Differentiated Accountability classification for the school is:	Focused
Is this school making (AYP) in the "ALL" subgroup in <b>reading</b> ?	Yes
Is this school making (AYP) in the "ALL" subgroup in <b>math</b> ?	Yes

In 2008, the Illinois State Board of Education (ISBE) was one of 6 states to be chosen by the US Department of Education to participate on the Differentiated Accountability Pilot Program. The Differentiated Accountability classification **applies only to schools in federal improvement status that do not make AYP**.

The classification is a descriptor (i.e., focused or comprehensive) that is added to a school's improvement status. Current Title I requirements do not change. The classification assists in distinguishing between schools that need focused supports verses more comprehensive interventions.

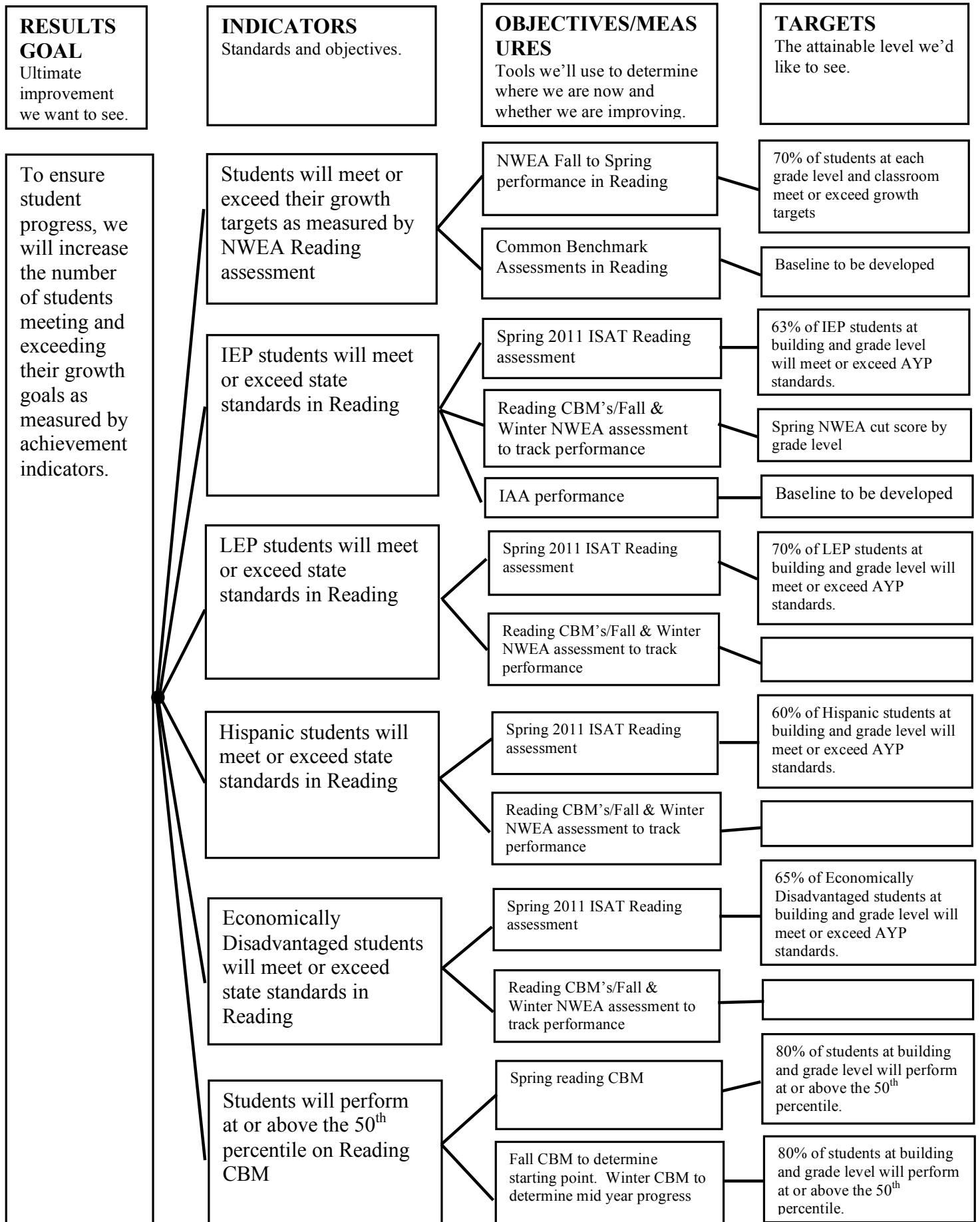
If a school does make AYP in ALL-student group in both reading and math, this school will be classified as a focused school; otherwise, the school will be identified as a comprehensive school.

**Glenview School District #34**  
**Department of Student Achievement**

**Hoffman School**  
**School Improvement Plan (SIP)**  
**2010-2011**

School	Hoffman	Year	2010-2011
Principal	Mark Walther		
School Improvement Team Members	Betsy Allen (5 <sup>th</sup> grade and Instructional Specialist), Michelle Chrul (3 <sup>rd</sup> grade), Linda Dorken (Reading Specialist), Melissa Evans (Gifted and Instructional Specialist), Judy Jedlink (Technology Facilitator), Mary Kalogeropoulos (5 <sup>th</sup> grade and District Rtl), Terri Kimura (Physical Education), Anastasia Mitas (Art), Jeff Morris (L.D. Resource), Paula Smeltekop (LRC Director), Mary Sue Smith (Literary Coach), Carly Spina (ELL), Beth Tsoumas (Instructional Coach), Mark Walther (Principal), Adrienne West (4 <sup>th</sup> grade), Stephanie Zar (Social Worker)		

# Hoffman School: SIP 2010-2011



**Hoffman School**  
**2010-2011 School Improvement Plan**  
**Executive Summary**

Our School Improvement plan focuses on the achievement of our students, encompasses our building goals, is consistent with the District 34 Strategic Plan, and is aligned with the Illinois Learning Standards.

1. 70% of all students will meet or exceed their growth targets in reading as measured by NWEA.
2. 63% of IEP students will meet or exceed standards on the ISAT reading test. (2009-2010-49.3%)
3. 70% of LEP students will meet or exceed standards on the ISAT reading test. (2009-2010-61.8%)
4. 60% of our Hispanic students will meet or exceed AYP standards on the 2011 ISAT reading test. (2009-2010 - 55.6%)
5. 65% of our economically disadvantaged students will meet or exceed AYP standards on the 2011 ISAT reading test. (2009-2010 - 63.6%)
6. 80% of all students will perform at or above the 50%-TILE on the Reading CBM.

**Targeted strategies developed to help us reach our**  
**2010-2011 SIP goals.**

1. All classroom, special education, bi-lingual, ELL, gifted, and Fine Arts/PE teachers will consistently utilize the components of balanced literacy in their instruction (guided reading, shared reading, independent reading, word study, and writing).
2. All classroom, special education, bi-lingual, ELL, gifted, and Fine Arts/PE teachers will utilize the R/LA Curriculum map in their instructional planning.

3. All classroom, special education, bi-lingual, ELL gifted, and Fine Arts/PE will participate in “7 Strategies of Assessment for Learning” training prior to December 1, 2010.
4. All classroom, bi-lingual, ELL, and gifted teachers will consistently utilize the new MacMillan/Words Their Way materials in reading instruction.
5. The RtI Leadership Team will develop, communicate, and consistently monitor a tiered intervention model of support for students.
6. Data Partners identified by the RtI Leadership Team will meet consistently with each mini-team to analyze student achievement in reading data including NWEA, CBM, trimester benchmark assessments in reading, formative classroom assessments, and other pertinent data.
7. All mini-teams will utilize the data described in the previous activity to develop appropriate interventions of support for their students.
8. All students not meeting AYP standards in reading will be targeted for specific reading intervention plans.
9. All special ed. and ELL teachers will meet approximately monthly on a rotating schedule to monitor the specific progress of their students.
10. The After School Reading Club (ARC) will continue to offer reading support to identified Title I students twice a week from October 1 – May 1 from 2:45-3:45 pm.
11. All ELL/Bi-Lingual teachers will continue to offer our Hispanic Parent/Student Outreach program (MAPA).
12. The first 30 minutes of every “tight” PLC meeting will be devoted to professional development for all staff in NWEA, Balanced Literacy, and Assessment for Learning. This will be coordinated by our Instructional Coach, Literacy Coach, Reading Specialist, and Principal.
13. All Physical Education teachers will deliver a reading instructional experience at least once a month to all students.

14. All Drama teachers will deliver Readers' Theater to all students and will make scripts for repeated practice available to all classroom teachers.
15. All Music teachers will deliver balanced literacy instruction to all 3<sup>rd</sup> and 4<sup>th</sup> grade students within the Music History unit and to all 5<sup>th</sup> grade students within the Opera unit.
16. All Art teachers will deliver balanced literacy instruction to all students at targeted times during Art classes.
17. Our Social Worker will use bibliotherapy as a tool to incorporate reading strategies with her assigned students.